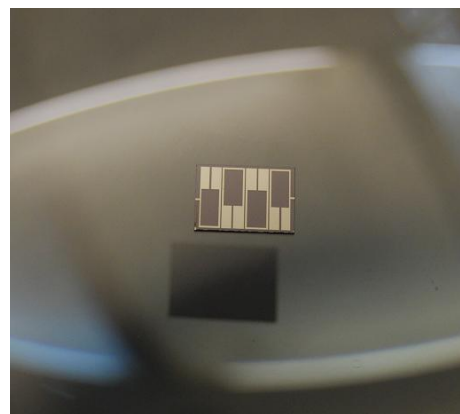


Microstrip 1300 MHz Filter  
 Bandwidth 220 MHz

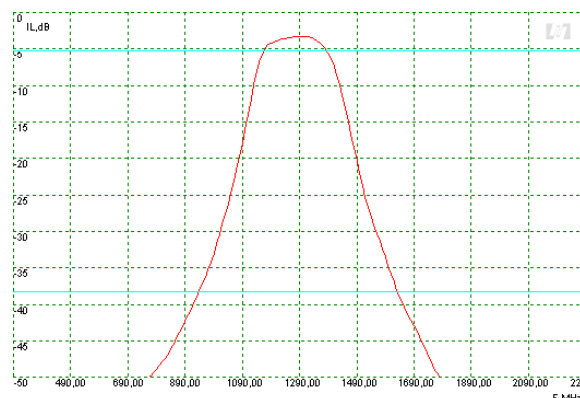
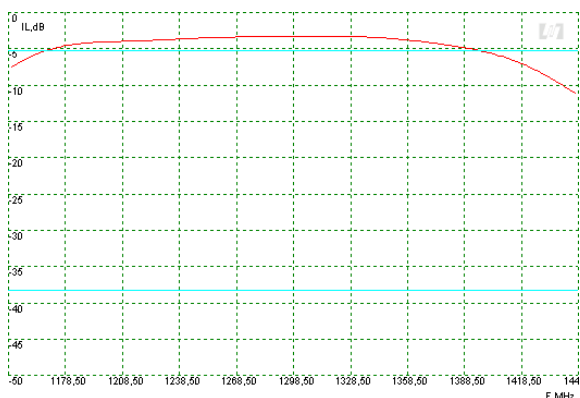
Features

- Low Insertion Loss
- Small Crystal Size



PRELIMINARY DATA

Typical performance



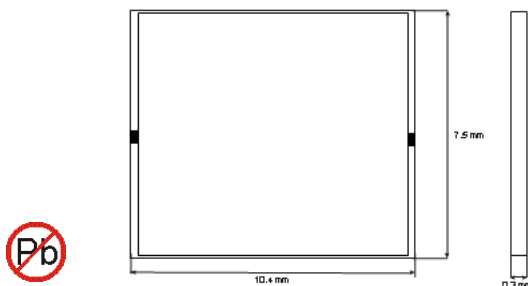
Electrical Specification

Parameter	Unit	Min	Typ	Max
Central frequency	MHz	-	1300	-
Inserted loss (unmatched)	dB	-	3.2	-
Bandwidth @-2dB	MHz	-	220	-
Bandwidth @-35dB	MHz	-	700	-
Ultimate rejection	dB	-	50	-

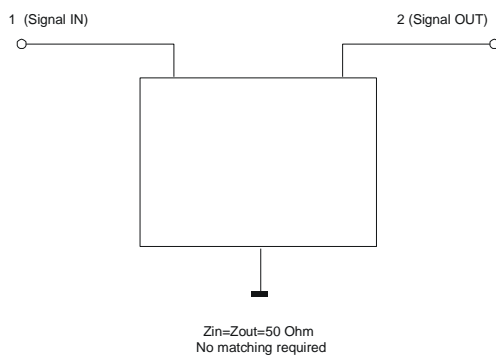
Notes

Microsaw reserves the right to make changes to the product and corresponding product specifications without notice. All data is valid for measurements in Microsaw's test fixture under Measurement Conditions: Ambient Temperature 22 °C, Input Power 0 dBm, Input/Output Impedance 50 Ω.

Size



## Matching Circuit



## Additional Information

Temperature range -55...85 °C

Substrate Sapphire

Complies with Directive 2002/95/EC (RoHS)

## Important Warnings

See soldering chart before using

See frequency shifts depending on temperature

## Links to Technical Information

Soldering profile: [www.micosaw.fi/pdf/soldering-chart.pdf](http://www.micosaw.fi/pdf/soldering-chart.pdf)

Frequency Shifts: [www.micosaw.fi/pdf/table.pdf](http://www.micosaw.fi/pdf/table.pdf)

## Links to Company Information

Services: [www.micosaw.fi/serviceandprices.php](http://www.micosaw.fi/serviceandprices.php)

Contacts: [www.micosaw.fi/contacts.php](http://www.micosaw.fi/contacts.php)