

SAW 225 MHz Ultra Wide Delay Line

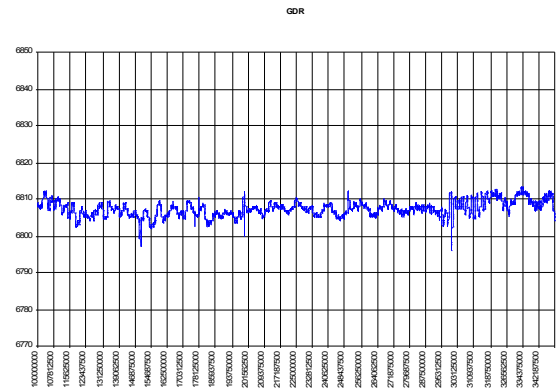
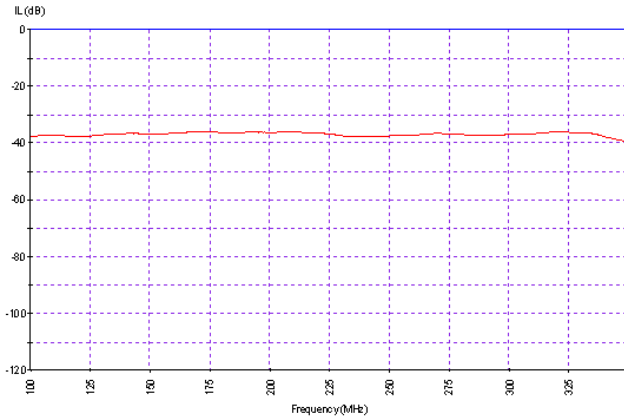
Bandwidth 250 MHz

Part Number M149-225M1

Complies with Directive 2002/95/EC (RoHS)

PRELIMINARY DATA

Typical performance



Specifications

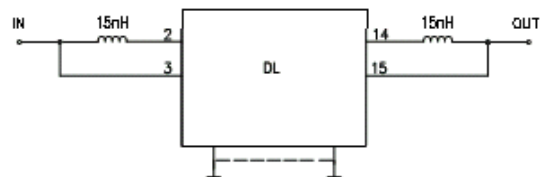
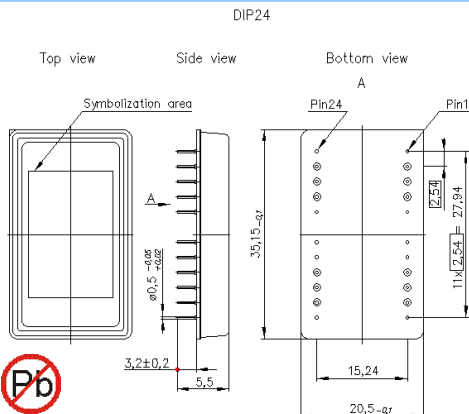
Parameter	Unit	Min	Typ	Max
Central frequency	MHz	-	225	-
Inserted loss (unmatched)	dB	-	36	38
Bandwidth edge @-4dB	MHz	100	-	350
Delay	nsec	6775	6800	6815
Amplitude ripple (100-350MHz bandwidth)	dB	-	3	4
Group Delay Ripple	nsec	-	20	-
Substrate	-	-	128 "Black" LNO	-
Temperature range	°C	-35	22	85

Notes:

1. The design, manufacturing process, and specifications of this filter are subject to change.
2. Specification valid for measurements in Microsaw test fixture.

Case

Matching



1,4,5,7-13,16-18,20-24 (GND)
6,19 - Not available