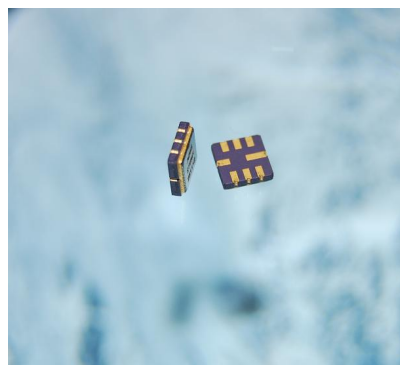


1458 MHz SAW Filter
 Bandwidth 3.1 MHz

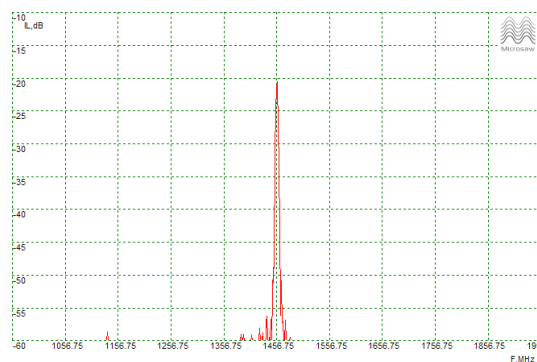
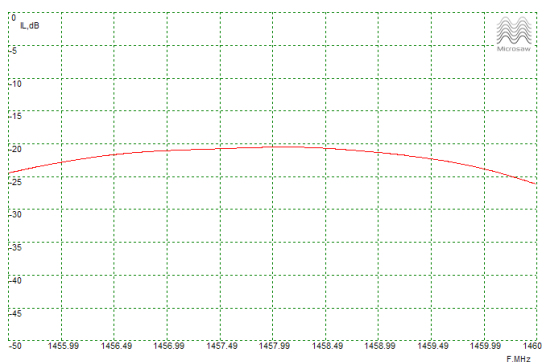
Features

- Quartz
- Small package
- High stability
- 1.5 GHz, Narrowband



PRELIMINARY DATA

Typical Performance



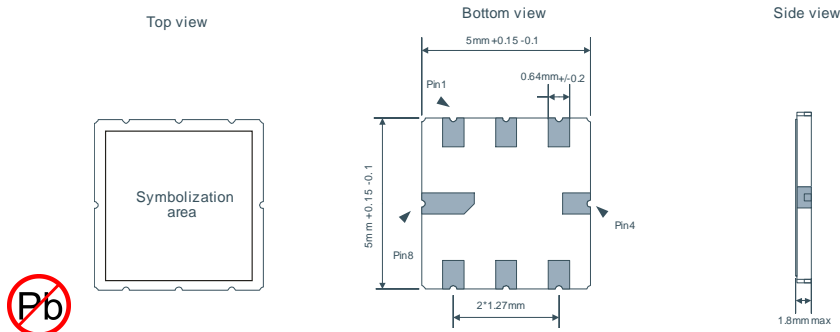
Electrical Specification

Parameter	Unit	Min	Typ	Max
Central frequency	MHz	1457.8	1458.0	1458.2
Inserted loss (unmatched)	dB	-	20.5	-
Bandwidth @-1.5 dB	MHz	-	3.1	-
Bandwidth @-30 dB	MHz	-	13.8	-
Amplitude ripple	dB	-	1	-
Ultimate rejection	dB	-	50	-

Notes

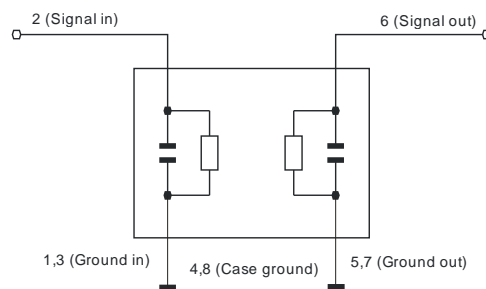
Microsaw reserves the right to make changes to the product and corresponding product specifications without notice. All data is valid for measurements in Microsaw's test fixture under Measurement Conditions: Ambient Temperature 22 °C, Input Power 0 dBm, In put/Output Impedance 50 Ohm.

Package



Matching Circuit

$Z_{in} = Z_{out} = 50 \text{ Ohm}$
 No matching required



Additional Information

Temperature range -55.. + 85C
 Substrate 36Q
 Package QCC8
 Complies with Directive 2002/95/EC (RoHS)

Important Warnings

Electric Sensitive Device
 See soldering chart before using
 See frequency shifts depending on temperature

Links to Technical Information

Soldering profile: www.micosaw.fi/pdf/soldering-chart.pdf
 Frequency shifts: www.micosaw.fi/pdf/frequency-shifts-table.pdf

Links to Company Information

Services: www.micosaw.fi/servicesandprices.php
 Contacts: www.micosaw.fi/contacts.php