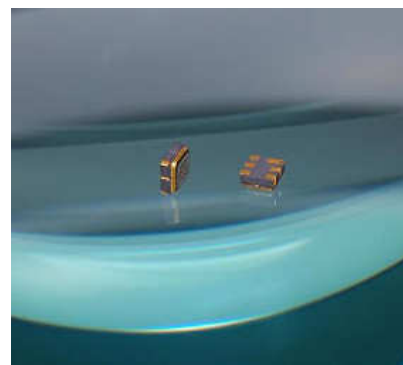


1575.42 MHz SAW Filter
 Bandwidth 29 MHz

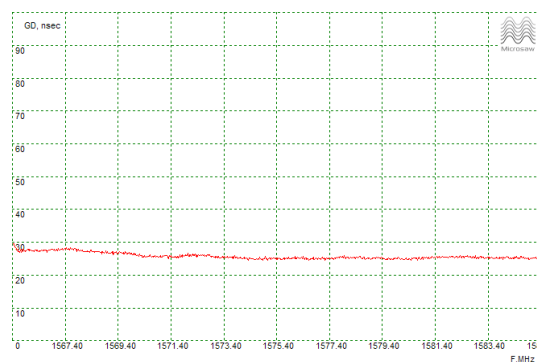
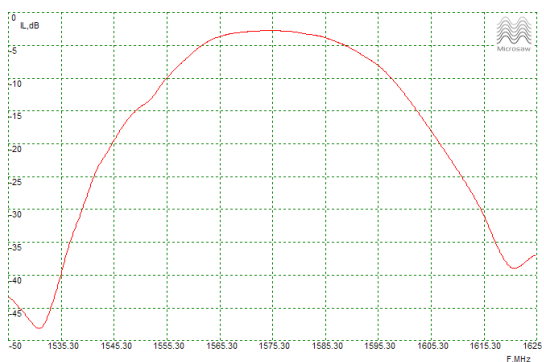
Features

- Low Loss
- Small package
- High selectivity
- Low cost



PRELIMINARY DATA

Typical Performance



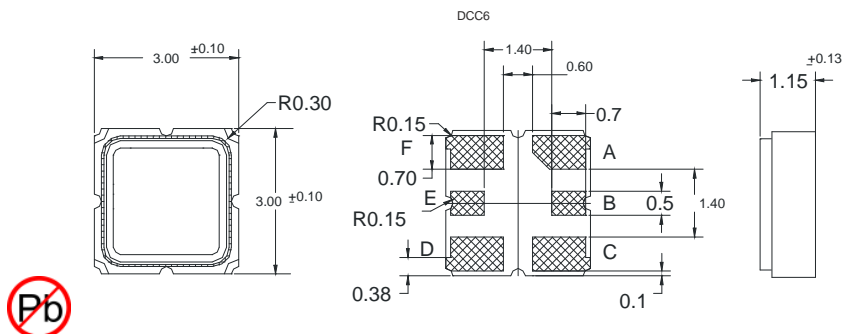
Electrical Specification

Parameter	Unit	Min	Typ	Max
Center frequency	MHz	-	1575.42	-
IL	dB	2.8	2.78	-
Bandwidth @-3 dB	dB	-	29	-
GDR	ns	-	2.8	-
Ultimate rejection	dB	-	45	-

Notes

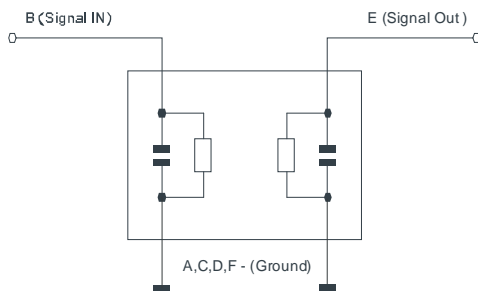
Microsaw reserves the right to make changes to the product and corresponding product specifications without notice. All data is valid for measurements in Microsaw test fixture under Measurement conditions: Ambient temperature 22 C deg, Input Power 0dBm, Input/Output impedance 50 Ohm.

Package



Matching Circuit

Z_{in}=Z_{out}=50 Ohm
 No matching required



Additional Information

Temperature Range -55.. + 85 C
 Substrate 36LTO
 Package DCC6
 Complies with Directive 2002/95/EC (RoHS)

Important Warnings

Electric Sensitive Device
 See soldering chart before using
 See frequency shifts depending on temperature

Links to Technical Information Links to Company Information

Soldering profile: www.microwave.fi/pdf/soldering-chart.pdf Services: www.microwave.fi/servicesandprices.php
 Frequency shifts: www.microwave.fi/pdf/frequency-shifts-table.pdf Contacts: www.microwave.fi/contacts.php

